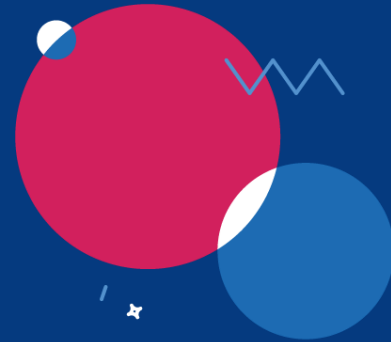


How to blend BPM and RPA?

What IT Managers and project leads should know

Roman Schlömmer

Oholisticon



A brief wrap-up

Where are we and why?

BPM



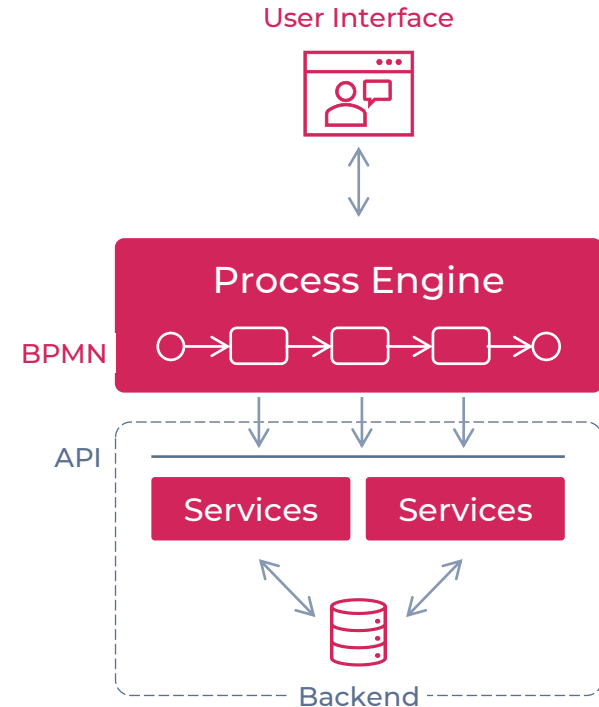
Established and state-of-the-art way of enterprise end-to-end process automation



The process run by an engine becomes an extra layer in the architecture based on BPMN

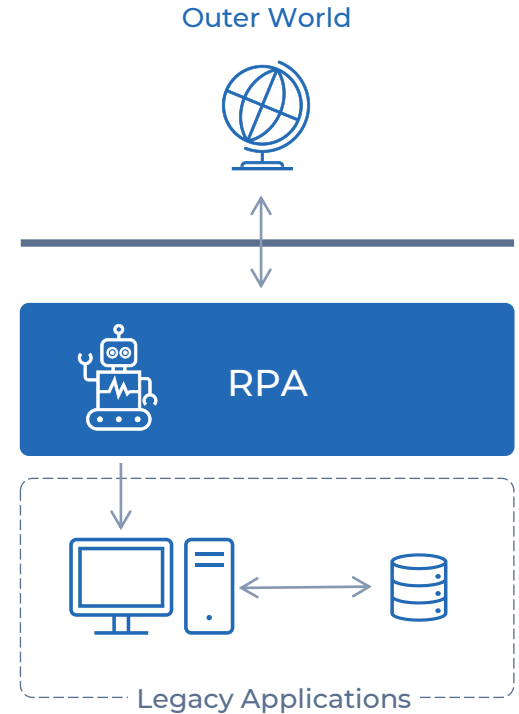


Plenty of tools to choose from to fit the needs of your company

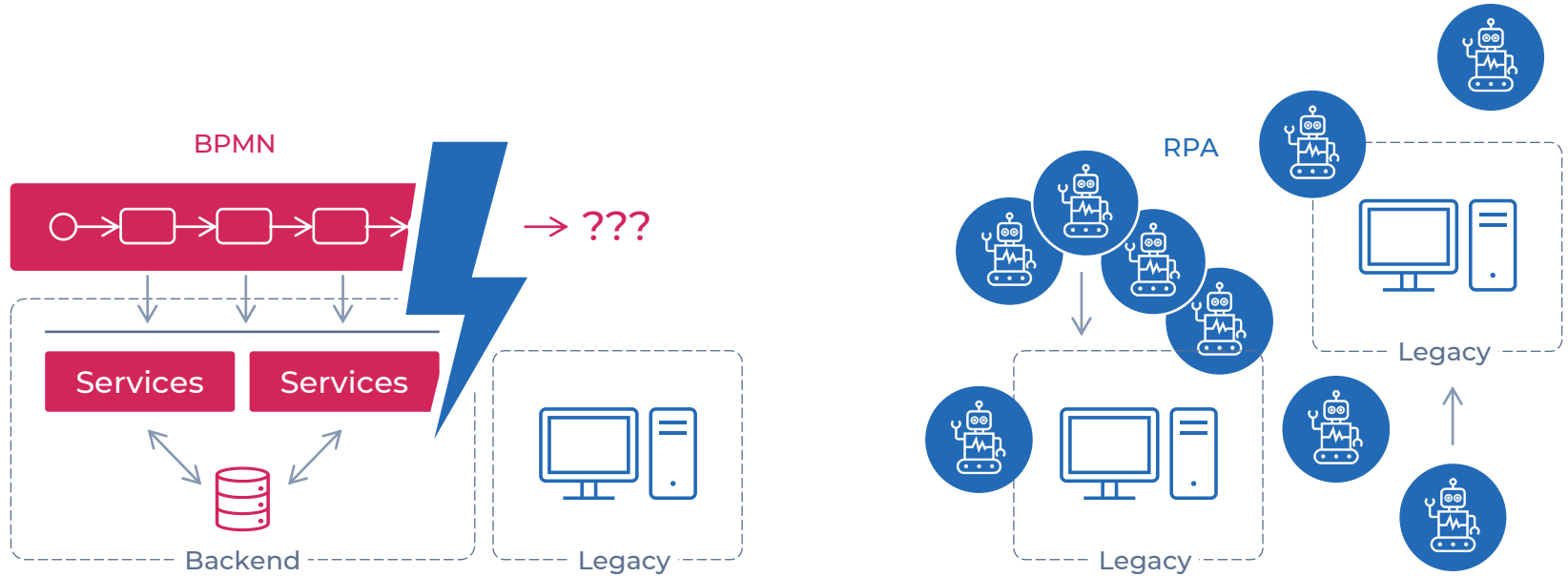


RPA

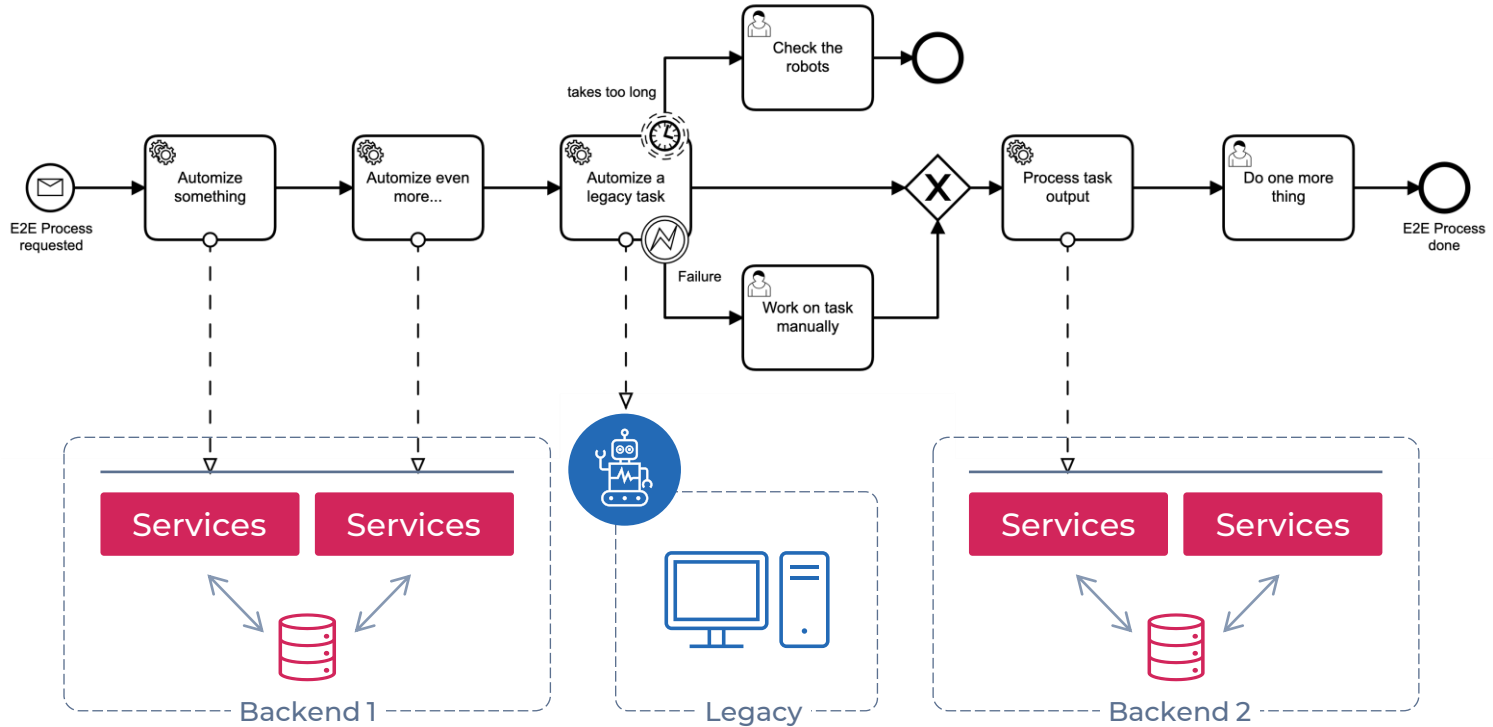
- Around for some years now and facing reality beyond the hype
- Integration of legacy systems in non-accessible environments without suitable API
- Used when integration has to go quick and re-implementing complex legacy data structures takes too long or development skills are not available



Business Reality



Best of both worlds



From a strategic point of view

How to gain time, save money and spend it wisely later?



Use RPA for the quick(est) wins

Ignite and push your digitalization initiative and save or even earn money.



Use that saved money for IT modernization

Don't stop – proceed! Finally get rid of your real technical debt and replace the legacy systems and go for process optimization.

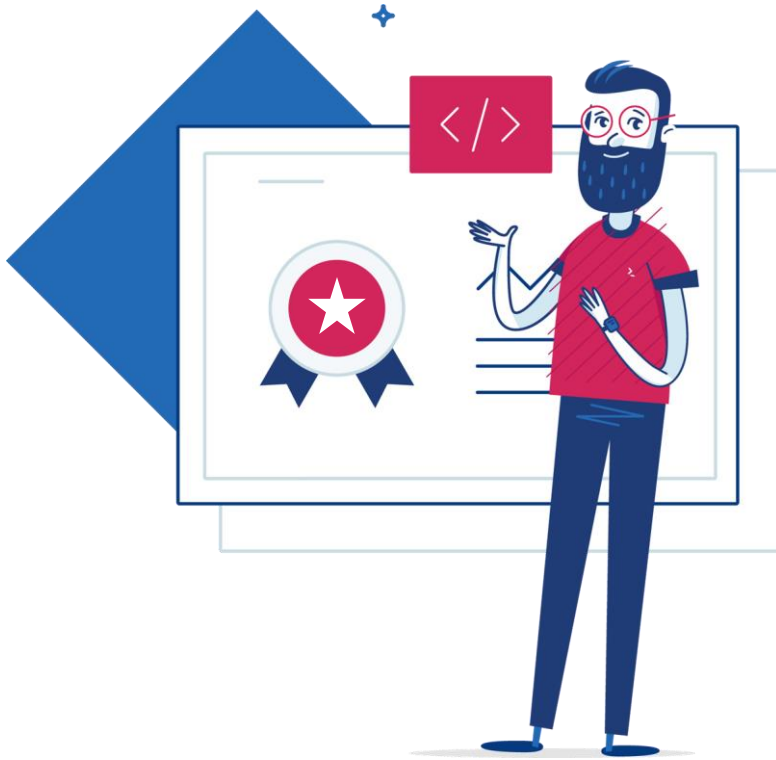


Design the bots for BPM integration

Keep the bots maintainable from the beginning and avoid making them substantial part of your technical debt.

A methodical approach

How to build robust bots and process? And whom to ask for help?



Don't just buy tools and build bot armies.

Each bot is a piece of software.

Build your bots with purpose and based on known principles for good software.

Because: Your bots must be managed and maintained.

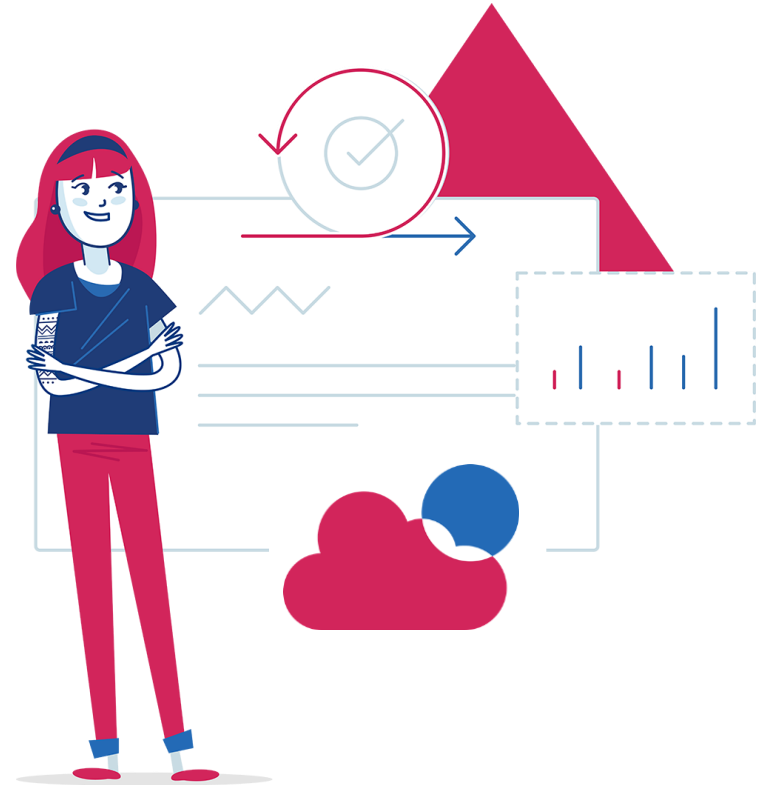
Ask your IT experts for help!

Design bots for end-to-end orchestration

Use practices from process-orientation and process design to find the right shape of your bots.

In BPM we are analyzing the end-to-end process to find the right sequence and granularity of tasks.

Use BPMN to model your processes. It's a commonly understood notation and a potentially executable model.





There is more than just the happy path!

Inevitably your bots will fail – because of business errors or technical problems.

Make use of principles from BPM to avoid process getting stuck.

Contact Us



Jacek Popko

Chief of Consulting

jacek.popko@rst.com.pl



Roman Schlömmner

Head of BPM

roman.schloemmer@holisticon.de

 **holisticon**